



Reporting Standard SRS 553.0

Investment Exposure Concentrations and Valuations

Objective of this reporting standard

This Reporting Standard sets out requirements for the provision of information to APRA relating to investment holdings and valuations of registrable superannuation entities (RSE), defined benefit RSEs pooled superannuation trusts.

It includes *Reporting Form SRF 553.0 Material Listed or Liquid Unlisted Exposures*, *Reporting Form SRF 553.1 Material Unlisted Exposures*, *Reporting Form SRF 553.2 Investment Options and Country Exposures*, *Reporting Form SRF 553.3 Valuations*, associated specific instructions and *Appendix A: Reportable Exposure Illustration*.

Authority

1. This Reporting Standard is made under section 13 of the *Financial Sector (Collection of Data) Act 2001*.

Purpose

2. Information collected under this Reporting Standard is used by APRA for the purposes of prudential supervision and publication. It may also be used by the Australian Securities and Investments Commission.

Application

3. This Reporting Standard applies to each registrable superannuation entity (RSE) licensee (RSE licensee) in respect of each RSE, defined benefit RSE and pooled superannuation trust (PST) within its business operations¹.

¹ For the purposes of this Reporting Standard, an RSE licensee's 'business operations' includes all activities it conducts as an RSE licensee (including the activities of each RSE of which it is the licensee), and all other activities of the RSE licensee to the extent that they are relevant to, or may impact on, its activities as an RSE licensee. For the avoidance of doubt, if the RSE licensee is trustee of more than one RSE, defined benefit RSE or pooled superannuation trust (PST), the RSE licensee must separately provide the information required by this Reporting Standard for each RSE, defined benefit RSE or PST within its business operations. An RSE licensee that does not have any RSEs, defined benefit RSEs or PSTs within its business operations is not required to provide information under this Reporting Standard.

Commencement

- This Reporting Standard commences at the start of the day after the day it is registered on the Federal Register of Legislation.

Reporting periods

- The RSE Licensee must provide the information required by this Reporting Standard for the reporting periods, by the due dates, set out in the table below.

Reporting Form	Reporting Table	Reporting Period	Due Date	First Reporting Period
<i>Reporting Form SRF 553.0 Material Listed or Liquid Unlisted Exposures (SRF 553.0)</i>	Table 1: Internally Managed – Material Listed or Liquid Unlisted Investments. Table 2: Externally Managed – Material Listed or Liquid Unlisted Investments	Each calendar quarter ending 30 September, 31 December, 31 March and 30 June each year	40 calendar days after the end of the relevant reporting period	The calendar quarter ending on 31 December 2025
<i>Reporting Form SRF 553.1 Material Unlisted Exposures (SRF 553.1)</i>	Table 1: Internally Managed – Material Unlisted Investments Table 2: Externally Managed – Material Unlisted Investments Table 3: Externally Managed – Material Unlisted Investments (Valuations)	Each calendar quarter ending 30 September, 31 December, 31 March and 30 June each year	40 calendar days after the end of the relevant reporting period	The calendar quarter ending on 31 December 2025
<i>Reporting Form</i>	Table 1:	Each calendar	40 calendar	The calendar

Reporting Form	Reporting Table	Reporting Period	Due Date	First Reporting Period
<i>SRF 553.2 Investment Option and Country Exposures</i> (SRF 553.2)	Investment Option Exposures Table 2: Country Exposures	quarter ending 30 September, 31 December, 31 March and 30 June each year	days after the end of the relevant reporting period	quarter ending on 31 December 2025
<i>Reporting Form SRF 553.3 Valuations</i> (SRF 553.3)	Table 1: Out Of Cycle Valuations – Material Unlisted Investments Table 2: Out Of Cycle Valuations – Material Impact On Investment Options	Each calendar quarter ending 30 September, 31 December, 31 March and 30 June each year	40 calendar days after the end of the relevant reporting period	The calendar quarter ending on 31 December 2025
	Table 3: RSE Valuation Profile	Each calendar quarter ending 30 September, 31 December, 31 March and 30 June each year	40 calendar days after the end of the relevant reporting period	The calendar quarter ending on 31 December 2025
	Table 4: RSE Internally and Externally Managed Investments	Each year ending on 30 June.	For the first reporting period: 15 December 2025 For subsequent reporting periods: 3 months after the end of the relevant reporting period	The year ending on 30 June 2025

Notices

6. If, having regard to the particular circumstances of an RSE, defined benefit RSE or PST, APRA considers it necessary or desirable to obtain information more or less frequently than as provided by paragraph 5, APRA may, by notice in writing, change the reporting periods for the particular RSE, defined benefit RSE or PST.
7. Where APRA has changed the reporting periods under paragraph 6 the RSE licensee must provide the relevant information within the time specified by the notice in writing.
8. APRA may grant, in writing, an RSE licensee an extension of a due date with respect to one or more RSEs, defined benefit RSEs or PSTs within its business operations, in which case the new due date for the provision of the information will be the due date specified on the notice of extension.

Note: For the avoidance of doubt, APRA's expectation is that if the due date for a particular reporting period falls on a day other than a usual business day, an RSE licensee will submit the information required no later than the due date.

Form and method of submission

9. The information required by this Reporting Standard must be given to APRA in electronic format using an electronic method available on APRA's website or by a method notified by APRA prior to submission.

Quality control

10. The information provided by an RSE licensee under this Reporting Standard must be the product of systems, procedures and internal controls that have been reviewed and tested by the RSE auditor of the RSE, defined benefit RSE or PST to which the information relates². This will require the RSE auditor to review and test the RSE licensee's systems, procedures and internal controls designed to enable the RSE licensee to report reliable information to APRA. This review and testing must be done on:
 - (a) an annual basis or more frequently if necessary to enable the RSE auditor to form an opinion on the reliability and accuracy of information; and
 - (b) at least a limited assurance engagement consistent with professional standards and guidance notes issued by the Auditing and Assurance Standards Board as may be amended from time to time, to the extent that they are not inconsistent with the requirements of *Prudential Standard SPS 310 Audit and Related Matters* (SPS 310).
11. All information provided by an RSE licensee under this Reporting Standard must be subject to systems, processes and controls developed by the RSE licensee for the internal review and authorisation of that information. It is the responsibility of the Board and senior management of the RSE licensee to ensure that an appropriate set of policies, procedures and controls for the authorisation of information submitted to APRA is in place.

² Refer also to *Prudential Standard SPS 310 Audit and Related Matters* (SPS 310).

Authorisation

12. When an officer or agent of an RSE licensee provides the information required by this Reporting Standard using an electronic format, the officer or agent must digitally sign the relevant information using a digital certificate acceptable to APRA.
13. If the information required by this Reporting Standard is provided by an agent who submits the information on the RSE licensee's behalf, the RSE licensee must:
 - (a) obtain from the agent a copy of the completed form with the information provided to APRA; and
 - (b) retain the completed copy.
14. An officer or agent of an RSE licensee who submits the information under this Reporting Standard for, or on behalf of, the RSE licensee must be authorised by either:
 - (a) the Chief Executive Officer of the RSE licensee; or
 - (b) the Chief Financial Officer of the RSE licensee.

Minor alterations to forms and instructions

15. APRA may make minor variations to:
 - (a) a form that is part of this Reporting Standard, and the instructions to such a form, to correct technical, programming or logical errors, inconsistencies or anomalies; or
 - (b) the instructions to a form, to clarify their application to the form, without changing any substantive requirement in the form or instructions.
16. If APRA makes such a variation, it must notify each RSE licensee that is required to report under this Reporting Standard.

Interpretation

17. In this Reporting Standard:

APRA means the Australian Prudential Regulation Authority established under the *Australian Prudential Regulation Authority Act 1998*.

Chief Executive Officer means the chief executive officer of the RSE licensee, by whatever name called, and whether or not he or she is a member of the Board of the RSE licensee³.

Chief Financial Officer means the chief financial officer of the RSE licensee, by whatever name called.

³ Refer to *Prudential Standard SPS 510 Governance*.

defined benefit RSE has the meaning of defined benefit fund in subsection 10(1) of the SIS Act.

due date means the relevant due date under paragraph 5, 7 or, if applicable, paragraph 8 of this Reporting Standard.

MySuper product has the meaning given in subsection 10(1) of the SIS Act.

reporting period means a period mentioned in paragraph 5 or, if applicable, paragraph 6 of this Reporting Standard.

RSE means a registrable superannuation entity as defined in subsection 10(1) of the SIS Act that is not a defined benefit RSE, pooled superannuation trust, small APRA fund or single member approved deposit fund⁴.

RSE auditor means an auditor appointed by the RSE licensee to perform functions under this Reporting Standard.

RSE licensee has the meaning given in subsection 10(1) of the SIS Act.

SIS Act means *Superannuation Industry (Supervision) Act 1993*.

SRS 101.0 means *Reporting Standard SRS 101.0 Definitions for Superannuation Data Collections*.

Pooled superannuation trust (PST) has the meaning given in subsection 10(1) of the SIS Act.

18. In this Reporting Standard, unless an instrument is not disallowable or a contrary intention appears, a reference to an Act, Regulation, Prudential Standard, Reporting Standard, Australian Accounting Standard or Auditing Standard is a reference to the instrument as in force or existing from time to time.
19. Where this Reporting Standard provides for APRA to exercise a power or discretion, this power or discretion is to be exercised in writing.

⁴ For the purposes of this Reporting Standard, ‘pooled superannuation trust’ has the meaning given in subsection 10(1) of the SIS Act, ‘small APRA fund’ means a superannuation entity that is a regulated superannuation fund, within the meaning of the SIS Act, which no more than six members and ‘single member approved deposit fund’ means a superannuation entity that is an approved deposit fund, within the meaning of the SIS Act, which has only one member.

Reporting Form SRF 553.0

Material Listed or Liquid Unlisted Exposures

Instruction Guide

This instruction guide is designed to assist in the completion of *Reporting Form SRF 553.0* Material Exposures (SRF 553.0). This form collects information relating to material exposures of RSEs to listed or liquid unlisted investments.

General directions and notes

Reporting level

SRF 553.0 must be completed for each RSE, defined benefit RSE and pooled superannuation trust (PST).

Reporting tables

Tables described in this reporting form list each of the data fields required to be reported. The data fields are listed sequentially in the column order that they will appear in the reported data set. Constraints on the data that can be reported for each field have also been provided.

The Unique identifier column indicates which field or fields form the primary key of the table. Where a field has ‘Y’ in the Unique identifier column, this denotes that this field forms part of the primary key for the table. A blank cell in the Unique identifier column means that the field does not form part of the primary key for the table. Any specific combination of values in the fields that form the primary key of a table must not appear on more than one row in that table when reported.

Reporting basis and unit of measurement

Report all items on SRF 553.0 in accordance with the Australian Accounting Standards, except where otherwise specified.

Assets and liabilities denominated in currencies other than AUD are to be converted to AUD using the mid-point rate (of market buying and selling spot quotations) effective as at the end of the reporting period. An RSE licensee may use those AUD exchange rates that it judges to be a

representative closing mid-market rate as at the end of the reporting period. However, to ensure consistency across related returns and to assist in the reconciliation between these returns, an RSE licensee must use the same exchange rates across all returns to APRA.

Items on SRF 553.0 must be reported as at the end of the reporting period or with respect to transactions that occurred during the reporting period as specified.

Amounts in SRF 553.0 are to be reported as whole dollars. Percentages are to be reported as an unconverted number to two decimal places. For example, 12.34 per cent is to be reported as 0.1234.

Definitions

Terms highlighted in ***bold italics*** indicate that the definition is provided in *Reporting Standard SRS 101.0 Definitions for Superannuation Data Collections* (SRS 101.0).

Specific instructions

Table 1: Internally Managed – Material Listed or Liquid Unlisted Investments

Instructions

Complete this table for material ***internally managed investments*** in listed or liquid unlisted assets that underlie ***internally managed investment options***.

Report the:

- 20 largest ***reportable exposures*** of the RSE, defined benefit RSE or PST to listed or liquid unlisted assets, and
- Any other ***reportable exposures*** to listed or liquid unlisted assets of at least 0.5% of total investments of the RSE, defined benefit RSE or PST.

For purposes of reporting in this table, listed or liquid unlisted assets include assets with the following characteristics:

- Investment Strategic Sector Listing Type of ‘Listed’; or

- Investment Strategic Sector Listing Type of ‘Fixed Income’, other than where the Investment Asset Class Characteristics 2 Type is ‘Fixed Income Private Debt’; or
- Investment Strategic Sector Type of Cash.

For Cash assets, measure the *reportable exposure* to each Authorised Deposit-taking Institution.

For Fixed Income assets, measure the *reportable exposure* to each issuer or counterparty (i.e. aggregate all fixed income assets under the same issuer or counterparty for the purposes of determining if it falls within the top 20 largest exposures of the RSE, defined benefit RSE or PST or at least 0.5% of total investments of the RSE, defined benefit RSE or PST).

Refer to the illustration in Appendix A for additional guidance on the *reportable exposures* to be measured and reported.

Where the same internally managed investment in listed or liquid unlisted asset is held across various internal vehicles, report *reportable exposures* on the asset separately for each vehicle.

Column	Field name	Unique identifier	Applicable to	Valid values	Description
1	Investment Identifier Type	Y	All filers	<ul style="list-style-type: none"> • <i>International Securities Identification Number (ISIN)</i> • <i>Committee on Uniform Security Identification Procedures (CUSIP)</i> • <i>CUSIP International Numbering System (CINS)</i> • <i>Stock Exchange Daily Official List (SEDOL) identifier</i> • <i>Options Clearing Corporation (OCC) Option Symbol</i> • <i>ABN</i> • <i>LEI</i> • <i>APIR Code</i> • <i>Internal Investment Identifier</i> 	<p>Report the <i>investment identifier type</i>.</p> <p>Report publicly available (external) identifiers, where available. Otherwise, use <i>internal investment identifier</i>.</p> <p>Where there is more than one external identifier available to the investment, use the most common and apply consistently across reporting periods.</p>
2	Investment Identifier	Y	All filers	Text (100)	Report the <i>Investment Identifier</i> of the investment that corresponds to the <i>Investment Identifier Type</i> .
3	Investment Name		All filers	Text (100)	Report the name of the investment (report the legal name where available).
4	Investment Type	Y	All filers	<ul style="list-style-type: none"> • <i>Directly Held</i> • <i>Indirectly Held</i> 	Report the <i>investment type</i> of the investment.

5	Number Of Interposed Internal Vehicles	Y	All filers	Integer	Report the number of internal investment vehicles between the RSE and the investment reported in this table.
6	Investment Arrangement Type	Y	All filers	<ul style="list-style-type: none"> • <i>Direct Investment</i> • <i>Co-investment</i> • <i>Individually Managed Mandate</i> • <i>Joint Venture</i> • <i>Managed Investment Schemes/ Pooled Funds</i> • Other 	Report the <i>investment arrangement type</i> of the investment.
7	Holding Vehicle Type	Y	All filers	<ul style="list-style-type: none"> • <i>Unlisted Private Trust</i> • <i>Limited Partnership</i> • <i>General Partnership</i> • <i>Special Purpose Vehicle</i> • <i>Managed Investment Schemes/Pooled Funds</i> • <i>Other</i> • Not Applicable 	Report the type of vehicle that holds the investments.

8	Investment Sector Type	Strategic	Y	All filers	<ul style="list-style-type: none"> • <i>Cash</i> • <i>Fixed Income</i> • <i>Fixed Income Excluding Credit</i> • <i>Credit</i> • <i>Equity</i> • <i>Property</i> • <i>Infrastructure</i> • <i>Alternatives</i> • <i>Growth Alternatives</i> • <i>Defensive Alternatives</i> 	Report the <i>strategic sector</i> of the investment.
9	Investment Sector Listing Type	Strategic	Y	All filers	<ul style="list-style-type: none"> • <i>Listed</i> • <i>Unlisted</i> • Not Specified 	Report the <i>listing type</i> of the strategic sector investment.
10	Investment Sector Domicile Type	Strategic	Y	All filers	<ul style="list-style-type: none"> • <i>Australian Domicile</i> • <i>International Domicile</i> • Not Specified 	Report the <i>domicile type</i> of the strategic sector of the investment.
11	Market Value Of Investments			All filers	Whole dollars	Report the market value of the investment.
12	Investment Proportion	Gearing Percent		All filers	Percentage to 2 decimal places	<p>For exposures with <i>Investment Type</i> of <i>Indirectly Held</i>, report the proportion of <i>actual gearing</i> of the investment vehicle that holds the asset.</p> <p>Report zero (0) where there is no gearing.</p>

13	Counterparty Rating Type	Credit	Y	All filers	<ul style="list-style-type: none">• Grade 1• Grade 2• Grade 3• Grade 4• Grade 5• Grade 6• Grade 7• Not Applicable• Not Available	Report the credit rating of the issuer or counterparty to the Fixed Income Investment. Report Not Applicable for all other asset classes.
----	-----------------------------	--------	---	------------	-------------------------------------------------------------------------------------------------------------------------------------------------------------------------------------------------------------------------------------------------------------------------	-------------------------------------------------------------------------------------------------------------------------------------------

Table 2: Externally Managed – Material Listed or Liquid Unlisted Investments

Instructions

Complete this table for material *externally managed investments* in listed or liquid unlisted assets that underlie *internally managed investment options*.

Report the:

- 20 largest *reportable exposures* of the RSE, defined benefit RSE or PST to listed or liquid unlisted assets, and
- Any other *reportable exposures* to listed or liquid unlisted assets of at least 0.5% of total investments of the RSE, defined benefit RSE or PST.

For purposes of reporting in this table, listed or liquid unlisted assets include:

1. Investments with the following characteristics:

- Investment Strategic Sector Listing Type of ‘Listed’; or
- Investment Strategic Sector Listing Type of ‘Fixed Income’, other than where the Investment Asset Class Characteristics 2 Type is ‘Fixed Income Private Debt’; or
- Investment Strategic Sector Type of Cash.

2. investment vehicles with a total exposure of greater than 80% to the following investments:

- Investment Strategic Sector Listing Type of ‘Listed’; or
- Investment Strategic Sector Listing Type of ‘Fixed Income’, other than where the Investment Asset Class Characteristics 2 Type is ‘Fixed Income Private Debt’; or
- Investment Strategic Sector Type of Cash.

For Cash assets, measure the *reportable exposure* to each Authorised Deposit-taking Institution.

For Fixed Income assets, measure the *reportable exposure* to each issuer or counterparty (i.e. aggregate all fixed income assets under the same issuer or counterparty for the purposes of determining if it falls within the top 20 largest exposures of the RSE, defined benefit RSE or PST or at least 0.5% of total investments of the RSE, defined benefit RSE or PST).

Refer to the illustration in Appendix A for additional guidance on the *reportable exposures* to be measured and reported.

Column	Field name	Unique identifier	Applicable to	Valid values	Description
1	Investment Identifier Type	Y	All filers	<ul style="list-style-type: none"> • <i>International Securities Identification Number (ISIN)</i> • <i>Committee on Uniform Security Identification Procedures (CUSIP)</i> • <i>CUSIP International Numbering System (CINS)</i> • <i>Stock Exchange Daily Official List (SEDOL) identifier</i> • <i>Options Clearing Corporation (OCC) Option Symbol</i> • <i>ABN</i> • <i>LEI</i> • <i>APIR Code</i> • <i>Internal Investment Identifier</i> 	<p>Report the <i>investment identifier type</i>.</p> <p>Report publicly available (external) identifiers, where available. Otherwise, use <i>internal investment identifier</i>.</p> <p>Where there is more than one external identifier available to the investment, use the most common and apply consistently across reporting periods.</p>
2	Investment Identifier	Y	All filers	Text (100)	Report the <i>Investment Identifier</i> of the investment that corresponds to the <i>Investment Identifier Type</i> .
3	Investment Name		All filers	Text (100)	Report the name of the investment (report the legal name where available).
4	Investment Type	Y	All filers	<ul style="list-style-type: none"> • <i>Directly Held</i> • <i>Indirectly Held</i> 	Report the <i>investment type</i> of the investment.

5	Investment Arrangement Type	Y	All filers	<ul style="list-style-type: none"> • <i>Direct Investment</i> • <i>Co-investment</i> • <i>Individually Managed Mandate</i> • <i>Joint Venture</i> • <i>Managed Investment Schemes/ Pooled Funds</i> • Other • Not available 	Report the <i>investment arrangement type</i> of the investment.
6	Holding Vehicle Type	Y	All filers	<ul style="list-style-type: none"> • <i>Unlisted Private Trust</i> • <i>Limited Partnership</i> • <i>General Partnership</i> • <i>Special Purpose Vehicle</i> • <i>Managed Investment Schemes/Pooled Funds</i> • <i>Other</i> • Not Applicable • Not Available 	Report the type of vehicle that holds the investments.
7	Investment Vehicle Listing Type	Y	All filers	<ul style="list-style-type: none"> • <i>Listed</i> • <i>Unlisted</i> • Not Applicable • Not Available 	Report the <i>listing type</i> of the <i>investment vehicle</i> .
8	Investment Vehicle Domicile Type	Y	All filers	<ul style="list-style-type: none"> • <i>Australian Domicile</i> • <i>International Domicile</i> • Not Applicable • Not Available 	Report the <i>domicile type</i> of the <i>investment vehicle</i> .

9	Investment Strategic Sector Type	Y	All filers	<ul style="list-style-type: none"> • <i>Cash</i> • <i>Fixed Income</i> • <i>Fixed Income Excluding Credit</i> • <i>Credit</i> • <i>Equity</i> • <i>Property</i> • <i>Infrastructure</i> • <i>Alternatives</i> • <i>Growth Alternatives</i> • <i>Defensive Alternatives</i> 	Report the strategic sector of the investment.
10	Investment Strategic Sector Listing Type	Y	All filers	<ul style="list-style-type: none"> • <i>Listed</i> • <i>Unlisted</i> • Not Specified 	Report the <i>listing type</i> of the strategic sector of the investment.
11	Investment Strategic Sector Domicile Type	Y	All filers	<ul style="list-style-type: none"> • <i>Australian Domicile</i> • <i>International Domicile</i> • Not Specified 	Report the <i>domicile type</i> of the strategic sector of the investment.
12	Market Value Of Investments		All filers	Whole dollars	Report the market value of the investment.
13	Investment Gearing Proportion Percent		All filers	Percentage to 2 decimal places	Report the <i>gearing proportion</i> of the investment vehicle. Report based on <i>actual gearing</i> levels. Where actual is not available, report based on <i>strategic gearing target</i> or <i>gearing limit</i> . Report zero (0) where there is no gearing.

14	Investment Gearing Proportion Type		All filers	<ul style="list-style-type: none"> • Actual Gearing • Strategic Gearing Target • Gearing Limit • Not Applicable • Not Available 	Report the type of investment <i>gearing proportion</i> reported.
15	Redemption Frequency		All filers	<ul style="list-style-type: none"> • Daily • Weekly • Monthly • Quarterly • Semi-annual • Annual • Less Frequent Than Annual • In Wind Down Or Liquidation • Not Applicable • Not Available 	<p>Report the frequency that transactions on the investment vehicle are permitted.</p> <p>For investments such as assets under lock-out periods or assets under development, report under 'Less frequent than annual'.</p>
16	Restricted Redemptions		All filers	<ul style="list-style-type: none"> • Yes • No • Not Applicable • Not Aavailable 	Report whether the investment has restrictions imposed against stated redemption frequency as at reporting date.

17	Counterparty Credit Rating Type		All filers	<ul style="list-style-type: none"> • Grade 1 • Grade 2 • Grade 3 • Grade 4 • Grade 5 • Grade 6 • Grade 7 • Not Applicable • Not Available 	Report the credit rating of the issuer or counterparty to the fixed income investment. Report 'Not Applicable' for all other asset classes.
----	------------------------------------	--	------------	-----------------------------------------------------------------------------------------------------------------------------------------------------------------------------------------------------------------------------------------------------------------------------------	---------------------------------------------------------------------------------------------------------------------------------------------

Reporting Form SRF 553.1

Material Unlisted Exposures

Instruction Guide

This instruction guide is designed to assist in the completion of *Reporting Form SRF 553.1 Unlisted Exposures* (SRF 553.1). This form collects information relating to unlisted investment exposures of RSEs.

General directions and notes

Reporting level

SRF 553.1 must be completed for each RSE, defined benefit RSE and pooled superannuation trust (PST).

Reporting tables

Tables described in this reporting form list each of the data fields required to be reported. The data fields are listed sequentially in the column order that they will appear in the reported data set. Constraints on the data that can be reported for each field have also been provided.

The Unique identifier column indicates which field or fields form the primary key of the table. Where a field has ‘Y’ in the Unique identifier column, this denotes that this field forms part of the primary key for the table. A blank cell in the Unique identifier column means that the field does not form part of the primary key for the table. Any specific combination of values in the fields that form the primary key of a table must not appear on more than one row in that table when reported.

Reporting basis and unit of measurement

Report all items on SRF 553.1 in accordance with the Australian Accounting Standards, except where otherwise specified.

Assets and liabilities denominated in currencies other than AUD are to be converted to AUD using the mid-point rate (of market buying and selling spot quotations) effective as at the end of the reporting period. An RSE licensee may use those AUD exchange rates that it judges to be a

representative closing mid-market rate as at the end of the reporting period. However, to ensure consistency across related returns and to assist in the reconciliation between these returns, an RSE licensee must use the same exchange rates across all returns to APRA.

Items on SRF 553.1 must be reported as at the end of the reporting period or with respect to transactions that occurred during the reporting period as specified.

Amounts in SRF 553.1 are to be reported as whole dollars. Percentages are to be reported as an unconverted number to two decimal places. For example, 12.34 per cent is to be reported as 0.1234.

Definitions

Terms highlighted in ***bold italics*** indicate that the definition is provided in *Reporting Standard SRS 101.0 Definitions for Superannuation Data Collections* (SRS 101.0).

Specific instructions

Table 1: Internally Managed – Material Unlisted Investments

Instructions

Complete this table for material ***internally managed investments*** in unlisted assets that underlie ***internally managed investment options***.

Report the:

- 20 largest ***reportable exposures*** of the RSE, defined benefit RSE or PST to unlisted assets; and
- Any other ***reportable exposures*** to unlisted assets of at least 0.5% of total investments of the RSE, defined benefit RSE or PST.

For the purposes of reporting in this table, unlisted assets include:

- Unlisted Property;
- Unlisted Infrastructure;
- Unlisted Equity;
- Unlisted Alternatives; and
- Private Credit (i.e. where the Asset Class Characteristics ~~3-2~~ is Fixed Income Private Debt).

Refer to the illustration in Appendix A for additional guidance on the *reportable exposures* to be measured and reported.

Where the same internally managed investment in unlisted asset is held across various internal vehicles, report *reportable exposures* on the asset separately for each vehicle.

Column	Field name	Unique identifier	Applicable to	Valid values	Description
1	Investment Identifier Type	Y	All filers	<ul style="list-style-type: none"> • <i>International Securities Identification Number (ISIN)</i> • <i>Committee on Uniform Security Identification Procedures (CUSIP)</i> • <i>CUSIP International Numbering System (CINS)</i> • <i>Stock Exchange Daily Official List (SEDOL) identifier</i> • <i>Options Clearing Corporation (OCC) Option Symbol</i> • <i>ABN</i> • <i>LEI</i> • <i>APIR Code</i> • <i>Internal Investment Identifier</i> 	<p>Report the <i>investment identifier type</i>.</p> <p>Report publicly available (external) identifiers, where available. Otherwise, use <i>internal investment identifier</i>.</p> <p>Where there is more than one external identifier available to the investment, use the most common and apply consistently across reporting periods.</p>
2	Investment Identifier	Y	All filers	Text (100)	Report the <i>Investment Identifier</i> of the investment that corresponds to the <i>Investment Identifier Type</i> .
3	Investment Name		All filers	Text (100)	Report the name of the investment (report the legal name where available).
4	Investment Type	Y	All filers	<ul style="list-style-type: none"> • <i>Directly Held</i> • <i>Indirectly Held</i> 	Report the <i>investment type</i> of the investment.

5	Number Of Interposed Internal Vehicles	Y	All filers	Integer	Report the number of internal investment vehicles between the RSE and the investment reported in this table.
6	Investment Arrangement Type	Y	All filers	<ul style="list-style-type: none"> • <i>Direct Investment</i> • <i>Co-investment</i> • <i>Individually Managed Mandate</i> • <i>Joint Venture</i> • <i>Managed Investment Schemes/ Pooled Funds</i> • Other 	Report the <i>investment arrangement type</i> of the investment.
7	Holding Vehicle Type	Y	All filers	<ul style="list-style-type: none"> • <i>Unlisted Private Trust</i> • <i>Limited Partnership</i> • <i>General Partnership</i> • <u><i>Special Purpose Vehicle</i></u> • <i>Managed Investment Schemes/Pooled Funds</i> • <i>Other</i> • Not Applicable 	Report the type of vehicle that holds the investments.

8	Investment Strategic Sector Type	Y	All filers	<ul style="list-style-type: none"> • <i>Cash</i> • <i>Fixed Income</i> • <i>Fixed Income Excluding Credit</i> • <i>Credit</i> • <i>Equity</i> • <i>Property</i> • <i>Infrastructure</i> • <i>Alternatives</i> • <i>Growth Alternatives</i> • <i>Defensive Alternatives</i> 	Report the <i>strategic sector</i> of the investment.
9	Investment Strategic Sector Listing Type	Y	All filers	<ul style="list-style-type: none"> • <i>Listed</i> • <i>Unlisted</i> • Not Specified 	Report the <i>listing type</i> of the strategic sector of the investment.
10	Investment Strategic Sector Domicile Type	Y	All filers	<ul style="list-style-type: none"> • <i>Australian Domicile</i> • <i>International Domicile</i> • Not Specified 	Report the <i>domicile type</i> of the strategic sector of the investment.
11	Market Value Of Investments		All filers	Whole dollars	Report the market value of the investment.
12	Ownership Percentage		All filers	Percentage to 2 decimal places	Report the percentage of RSE ownership of the asset at reporting date.

13	Investment Gearing Proportion Percent		All filers	Percentage to 2 decimal places	For exposures with <i>Investment Type of Indirectly Held</i> , report the proportion of <i>actual gearing</i> of the investment vehicle that holds the asset. Report zero (0) where there is no gearing.
14	Valuation Movement		All filers	Whole dollars	Report changes in capital value (i.e. capital gain or loss) of the investment during the reporting period. If a valuation performed during the reporting period results in no change in capital value, then report zero (0). If there was no valuation performed during the reporting period, leave this field blank.
15	Valuation Type		All filers	<ul style="list-style-type: none"> • <i>Formal Valuation</i> • <i>Informal Valuation</i> • <i>Other</i> • Not Applicable • Not Available 	<p>Report the basis of the asset valuations adopted during the reporting period.</p> <p>Report for the valuations adopted most recent to the reporting date.</p> <p>This should correspond to the <i>Valuer Type</i>.</p>

16	Valuation Cycle		All filers	<ul style="list-style-type: none"> • Daily • Weekly • Monthly • Quarterly • Semi-annual • Annual • Less Frequent Than Annual • Other • Not Available 	Report the valuation frequency of the investment.
17	Independent Valuation Frequency		All filers	<ul style="list-style-type: none"> • Daily • Weekly • Monthly • Quarterly • Semi-annual • Annual • Less Frequent Than Annual • Not Subject To Independent Valuation Review • Not Available 	Report the frequency of independent valuation performed on the investment.

18	Valuer Type		All filers	<ul style="list-style-type: none"> • <i>Investment Manager</i> • <i>Independent Valuer Appointed By The Investment Manager</i> • <i>Other Service Provider For The Investment Manager</i> • <i>Independent Valuer Appointed By The RSE Licensee</i> • <i>Internal - RSE Licensee</i> • <i>Other Service Provider For The RSE Licensee</i> • <i>Independent Valuer Appointed By Investee Company</i> • Not Applicable • Not Available 	<p>Report the primary (main) <i>Valuer Type</i> of the valuations adopted during the reporting period.</p> <p>Report for the valuations adopted most recent to the reporting date. This should correspond to the <i>Valuation Type</i>.</p>
19	Valuer Name		All filers	Text (100)	<p>Report the valuer’s name if known (the valuer’s legal name should be provided). Report “Unknown” if valuer name is unknown to the RSE.</p>

20	Valuation Approach		All filers	<ul style="list-style-type: none"> • <i>Income Approach</i> • <i>Market Approach</i> • <i>Cost Approach</i> • Income And Market Approach • Income And Cost Approach • Market And Cost Approach • Income, Market And Cost Approach • Other • Not Applicable • Not Available 	Report the <i>Valuation Approach</i> .
21	Change In Valuation Approach Or Methodology		All filers	<ul style="list-style-type: none"> • Yes • No • Not Available 	Report whether there was a change in valuation approach or methodology during the reporting period.
22	Range Of Input For Rates Type			<ul style="list-style-type: none"> • <i>Capitalisation Rate</i> • <i>Discount Rate</i> • <i>Other</i> • Not Applicable • Not Available 	Report the type of input rates reported.
23	Range Of Input For Rates - Lower Range			Percentage in 2 decimal places	Report the lower value of the range of rates used as input in asset valuation.
24	Range Of Input For Rates - Upper Range			Percentage in 2 decimal places	Report the upper value of the range of rates used as input in asset valuation.

Table 2: Externally Managed – Material Unlisted Investments

Instructions

Complete this table for material *externally managed investments* in unlisted assets that underlie *internally managed investment options*.

Report the:

- 20 largest *reportable exposures* of the RSE, defined benefit RSE or PST to unlisted assets, and
- Any other *reportable exposures* to unlisted assets of at least 0.5% of total investments of the RSE, defined benefit RSE or PST.

The above materiality criteria apply to:

- *Externally managed investments* under an *individually managed mandate* where at least 20% of that investment mandate is invested in unlisted assets; or
- *Externally managed investments* where at least 20% of the investment vehicle is invested in unlisted assets.

For the purposes of reporting in this table, unlisted assets include:

- Unlisted Property;
- Unlisted Infrastructure;
- Unlisted Equity;
- Unlisted Alternatives; and
- Private Credit (i.e. where the Asset Class Characteristics ~~3-2~~ is Fixed Income Private Debt).

Refer to the illustration in Appendix A for additional guidance on the *reportable exposures* to be measured and reported.

Column	Field name	Unique identifier	Applicable to	Valid values	Description
1	Investment Identifier Type	Y	All filers	<ul style="list-style-type: none"> • <i>International Securities Identification Number (ISIN)</i> • <i>Committee on Uniform Security Identification Procedures (CUSIP)</i> • <i>CUSIP International Numbering System (CINS)</i> • <i>Stock Exchange Daily Official List (SEDOL) identifier</i> • <i>Options Clearing Corporation (OCC) Option Symbol</i> • <i>ABN</i> • <i>LEI</i> • <i>APIR Code</i> • <i>Internal Investment Identifier</i> 	<p>Report the <i>investment identifier type</i>.</p> <p>Report publicly available (external) identifiers, where available. Otherwise, use <i>internal investment identifier</i>.</p> <p>Where there is more than one external identifier available to the investment, use the most common and apply consistently across reporting periods.</p>
2	Investment Identifier	Y	All filers	Text (100)	Report the <i>Investment Identifier</i> of the investment that corresponds to the <i>Investment Identifier Type</i> .
3	Investment Name		All filers	Text (100)	Report the name of the investment (report the legal name where available).
4	Investment Type	Y	All filers	<ul style="list-style-type: none"> • <i>Directly Held</i> • <i>Indirectly Held</i> 	Report the <i>investment type</i> of the investment.

5	Investment Arrangement Type	Y	All filers	<ul style="list-style-type: none"> • <i>Direct Investment</i> • <i>Co-investment</i> • <i>Individually Managed Mandate</i> • <i>Joint Venture</i> • <i>Managed Investment Schemes/ Pooled Funds</i> • Other • Not Available 	Report the <i>investment arrangement type</i> of the investment.
6	Holding Vehicle Type	Y	All filers	<ul style="list-style-type: none"> • <i>Unlisted Private Trust</i> • <i>Limited Partnership</i> • <i>General Partnership</i> • <i>Special Purpose Vehicle</i> • <i>Managed Investment Schemes/Pooled Funds</i> • <i>Other</i> • Not Applicable • Not Available 	Report the type of vehicle that holds the investments.
7	Investment Vehicle Listing Type	Y	All filers	<ul style="list-style-type: none"> • <i>Listed</i> • <i>Unlisted</i> • Not Available 	Report the <i>listing type</i> of the <i>investment vehicle</i> .
8	Investment Vehicle Domicile Type	Y	All filers	<ul style="list-style-type: none"> • <i>Australian Domicile</i> • <i>International Domicile</i> • Not Available 	Report the <i>domicile type</i> of the <i>investment vehicle</i> .

9	Investment Strategic Sector Type	Y	All filers	<ul style="list-style-type: none"> • <i>Cash</i> • <i>Fixed Income</i> • <i>Fixed Income Excluding Credit</i> • <i>Credit</i> • <i>Equity</i> • <i>Property</i> • <i>Infrastructure</i> • <i>Alternatives</i> • <i>Growth Alternatives</i> • <i>Defensive Alternatives</i> 	Report the <i>strategic sector</i> of the investment.
10	Investment Strategic Sector Listing Type	Y	All filers	<ul style="list-style-type: none"> • <i>Listed</i> • <i>Unlisted</i> • Not Specified 	Report the <i>listing type</i> of the strategic sector of the investment.
11	Investment Strategic Sector Domicile Type	Y	All filers	<ul style="list-style-type: none"> • <i>Australian Domicile</i> • <i>International Domicile</i> • Not Specified 	Report the <i>domicile type</i> of the strategic sector of the investment.
12	Market Value Of Investments		All filers	Whole dollars	Report the market value of the investment.

13	Valuation Movement		All filers	Whole dollars	Report changes in capital value (i.e. capital gain or loss) of the investment during the reporting period. If a valuation performed during the reporting period results in no change in capital value, then report zero (0). If there was no valuation performed during the reporting period, leave this field blank.
14	Investment Gearing Proportion Percent		All filers	Percentage to 2 decimal places	Report the <i>gearing proportion</i> of the investment vehicle. Report based on <i>actual gearing</i> levels. Where actual is not available, report based on <i>strategic gearing target</i> or <i>gearing limit</i> . Report zero (0) where there is no gearing.
15	Investment Gearing Proportion Type		All filers	<ul style="list-style-type: none"> • <i>Actual Gearing</i> • <i>Strategic Gearing Target</i> • <i>Gearing Limit</i> • Not Applicable • Not Available 	Report the type of investment <i>gearing proportion</i> reported.

16	Redemption Frequency		All filers	<ul style="list-style-type: none"> • Daily • Weekly • Monthly • Quarterly • Semi-annual • Annual • Less Frequent Than Annual • In Wind Down Or Liquidation • Not Applicable • Not Available 	<p>Report the frequency that transactions on the investment vehicle are permitted.</p> <p>For investments such as assets under lock-out periods or assets under development, report under 'Less Frequent Than Annual'.</p>
17	Restricted Redemptions		All filers	<ul style="list-style-type: none"> • Yes • No • Not Applicable • Not Available 	Report whether the investment has restrictions imposed against stated redemption frequency as at report date.
18	Outstanding Commitments		All filers	Whole dollars	Report the value, as at the relevant date, of commitments to invest additional monies.
19	Date Of Latest External Audit Assessment		All filers	Date	Report the date of the vehicles' latest external audit assessment.
20	Exceptions Noted In The Audit Assessment		All filers	<ul style="list-style-type: none"> • Yes • No • Not Available 	<p>Report whether any exceptions have been identified in the audit assessment.</p> <p>This should include material valuation-related findings in external audit management reports.</p>

21	Review Of External Investment Manager Valuation Practice		All filers	<ul style="list-style-type: none"> • Daily • Weekly • Monthly • Quarterly • Semi-annual • Annual • Less Frequent Than Annual • Not Applicable • Not Available 	Report the frequency that a formal review of the external investment manager's valuation practice is undertaken.
----	----------------------------------------------------------	--	------------	------------------------------------------------------------------------------------------------------------------------------------------------------------------------------------------------------------------------------------------------------	------------------------------------------------------------------------------------------------------------------

Table 3: Externally Managed – Material Unlisted Investments (Valuations)

Instructions

Complete this table for underlying investments of the *externally managed investments* reported in SRF 553.1 Table 2. Where the *externally managed investment* reported in SRF 553.1 Table 2 is an investment vehicle that holds a number of assets or funds, report the 3 largest underlying investments held by that vehicle.

Where the underlying investment is:

- an asset held directly by the vehicle, report at the asset level; or
- an investment in another vehicle, report at the underlying vehicle level.

Column	Field name	Unique identifier	Applicable to	Valid values	Description
1	Investment Identifier	Y	All filers	Text (100)	Report the <i>investment identifier</i> of the investment reported in SRF 553.1 Table 2.
2	Investment Identifier Of The Underlying Investment	Y	All filers	Text (100)	Report the investment identifier of the underlying investment where available or relevant. Where not available or not applicable, report the investment identifier of the externally managed investment reported in SRF 553.1 Table 2 that holds the underlying investment.
3	Underlying Investment Name		All filers	Text (100)	Report the name of the underlying asset that corresponds to the <i>Investment Identifier</i> .
4	Market Value Of Investments		All filers	Whole dollars	Report the market value of the investment.
5	Proportion Of Investments Valued This Period		All filers	Percentage to 2 decimal places	Report the proportion of the investments with valuations updated during the reporting period.

6	Valuation Movement		All filers	Whole dollars	Report changes in capital value (i.e. capital gain or loss) of the investment during the reporting period. If a valuation performed during the reporting period results in no change in capital value, then report zero (0). If there was no valuation performed during the reporting period, leave this field blank.
7	Valuation Type		All filers	<ul style="list-style-type: none"> • Formal Valuation • Informal Valuation • Other • Not Available • Not Applicable 	<p>Report the basis of the asset valuations adopted during the reporting period.</p> <p>Report for the valuations adopted most recent to the reporting date. This should correspond to the Valuer Type.</p>
8	Valuation Cycle		All filers	<ul style="list-style-type: none"> • Daily • Weekly • Monthly • Quarterly • Semi-annual • Annual • Less Frequent Than Annual • Other • Not Available 	Report the valuation frequency of the investment.

9	Independent Valuation Frequency		All filers	<ul style="list-style-type: none"> • Daily • Weekly • Monthly • Quarterly • Semi-annual • Annual • Less Frequent Than Annual • Not Subject To Independent Valuation Review • Not Available 	Report the frequency of independent valuation performed on the investment.
10	Valuer Type		All filers	<ul style="list-style-type: none"> • <i>Investment Manager</i> • <i>Independent Valuer Appointed By The Investment Manager</i> • <i>Other Service Provider For The Investment Manager</i> • <i>Independent Valuer Appointed By The RSE Licensee</i> • <i>Internal – RSE Licensee</i> • <i>Other Service Provider For The RSE Licensee</i> • <i>Independent Valuer Appointed By Investee Company</i> • Not Available • Not Applicable 	<p>Report the primary (main) <i>Valuer Type</i> of the valuations adopted during the reporting period.</p> <p>Report for the valuations adopted most recent to the reporting date.</p> <p>This should correspond to the <i>Valuation Type</i>.</p>

11	Valuer Name		All filers	Text (100)	Report the valuer's name if known (the valuer's legal name should be provided). Report "Unknown" if valuer name is unknown to the RSE.
12	Valuation Approach		All filers	<ul style="list-style-type: none"> • Income Approach • Market Approach • Cost Approach • Income and Market Approach • Income and Cost Approach • Market and Cost Approach • Income, Market and Cost Approach • Other • Not Available • Not Applicable 	Report the <i>Valuation Approach</i> .
13	Change In Valuation Approach Or Methodology		All filers	<ul style="list-style-type: none"> • Yes • No • Not Available 	Report if there is a change in valuation approach or methodology during the reporting period.
14	Range Of Input For Rates Type			<ul style="list-style-type: none"> • Capitalisation Rate • Discount Rate • Other • Not Applicable • Not Available 	Report the type of input rates reported.

15	Range Of Input For Rates - Lower Range			Percentage in 2 decimal places	Report the lower value of the range of rates used as input in asset valuation.
16	Range Of Input For Rates - Upper Range			Percentage in 2 decimal places	Report the upper value of the range of rates used as input in asset valuation.

Reporting Form SRF 553.2

Investment Option and Country Exposures

Instruction Guide

This instruction guide is designed to assist in the completion of *Reporting Form SRF 553.2 Investment Option and Country Exposures* (SRF 553.2). This form collects information relating to investment option exposures and country exposures of RSEs.

General directions and notes

Reporting level

SRF 553.2 must be completed for each RSE, defined benefit RSE and pooled superannuation trust (PST).

Reporting tables

Tables described in this reporting form list each of the data fields required to be reported. The data fields are listed sequentially in the column order that they will appear in the reported data set. Constraints on the data that can be reported for each field have also been provided.

The Unique identifier column indicates which field or fields form the primary key of the table. Where a field has ‘Y’ in the Unique identifier column, this denotes that this field forms part of the primary key for the table. A blank cell in the Unique identifier column means that the field does not form part of the primary key for the table. Any specific combination of values in the fields that form the primary key of a table must not appear on more than one row in that table when reported.

Reporting basis and unit of measurement

Report all items on SRF 553.2 in accordance with the Australian Accounting Standards, except where otherwise specified.

Assets and liabilities denominated in currencies other than AUD are to be converted to AUD using the mid-point rate (of market buying and selling spot quotations) effective as at the end of the reporting period. An RSE licensee may use those AUD exchange rates that it judges to be a

representative closing mid-market rate as at the end of the reporting period. However, to ensure consistency across related returns and to assist in the reconciliation between these returns, an RSE licensee must use the same exchange rates across all returns to APRA.

Items on SRF 553.2 must be reported as at the end of the reporting period or with respect to transactions that occurred during the reporting period as specified.

Amounts in SRF 553.2 are to be reported as whole dollars.

Definitions

Terms highlighted in ***bold italics*** indicate that the definition is provided in *Reporting Standard SRS 101.0 Definitions for Superannuation Data Collections* (SRS 101.0).

Specific instructions

Table 1: Investment Option Exposures

Instructions

For each RSE, defined benefit RSE or PST, report the ***Investment Options*** that have exposure to the investments reported in the following tables:

- SRF 553.0 Material Listed or Liquid Unlisted Exposures Table 1: Internally Managed – Material Listed or Liquid Unlisted Investments
- SRF 553.0 Material Listed or Liquid Unlisted Exposures Table 2: Externally Managed – Material Listed or Liquid Unlisted Investments
- SRF 553.1 Material Unlisted Exposures Table 1: Internally Managed – Material Unlisted Investments
- SRF 553.1 Material Unlisted Exposures Table 2: Externally Managed – Material Unlisted Investments

Column	Field name	Unique identifier	Applicable to	Valid values	Description
1	Investment Option Identifier	Y	All filers	Text (20)	Report the <i>investment option identifier</i> . The <i>investment option identifier</i> must correspond to an <i>investment option identifier</i> reported in SRF 605.0.
2	Investment Identifier	Y	All filers	Text (20 100)	Report the <i>investment identifier</i> .
3	Market Value Of Investments		All filers	Whole dollars	Report the market value of the investment.

Table 2: Country Exposures

Instructions

For each RSE, defined benefit RSE or PST, report each country of investment.

Column	Field name	Unique identifier	Applicable to	Valid values	Description
1	Investment Strategic Sector Type	Y	All filers	<ul style="list-style-type: none"> • <i>Cash</i> • <i>Fixed Income</i> • <i>Fixed Income Excluding Credit</i> • <i>Credit</i> • <i>Equity</i> • <i>Property</i> • <i>Infrastructure</i> • <i>Alternatives</i> • <i>Growth Alternatives</i> • <i>Defensive Alternatives</i> 	Report the <i>strategic sector</i> of the investment.
2	Investment Asset Class Sector Type	Y	All filers	<ul style="list-style-type: none"> • <i>Cash</i> • <i>Fixed Income</i> • <i>Equity</i> • <i>Property</i> • <i>Infrastructure</i> • <i>Alternatives</i> 	Report the <i>asset class sector type</i> of the investment.
3	Country	Y	All filers	Applicable country name	Report the country of investment. Report 'Not Applicable' if the exposure is not country specific, and report the relevant <i>international region exposure</i> in column 4.

4	International Region Exposure	Y	All filers	<ul style="list-style-type: none"> • <i>Global</i> • <i>Americas Region</i> • <i>Asia Region</i> • <i>Europe Region</i> • <i>Mid East <u>Or</u> Africa Region</i> • <i>Oceania Region</i> • <i>Individual Country</i> 	Report the international region exposure. Report 'Individual Country' if a country exposure is reported in <i>country</i> in column 3.
5	Market Value Of Investments		All filers	Whole dollars	Report the aggregate market value of the investments.

Reporting Form SRF 553.3

Valuations

Instruction Guide

This instruction guide is designed to assist in the completion of *Reporting Form SRF 553.3 Valuations* (SRF 553.3). This form collects information relating to investment valuations of RSEs, defined benefit RSEs and pooled superannuation trusts (PST).

General directions and notes

Reporting level

SRF 553.3 must be completed for each RSE, defined benefit RSE and PST.

Reporting tables

Tables described in this reporting form list each of the data fields required to be reported. The data fields are listed sequentially in the column order that they will appear in the reported data set. Constraints on the data that can be reported for each field have also been provided.

The Unique identifier column indicates which field or fields form the primary key of the table. Where a field has ‘Y’ in the Unique identifier column, this denotes that this field forms part of the primary key for the table. A blank cell in the Unique identifier column means that the field does not form part of the primary key for the table. Any specific combination of values in the fields that form the primary key of a table must not appear on more than one row in that table when reported.

Reporting basis and unit of measurement

Report all items on SRF 553.3 in accordance with the Australian Accounting Standards.

Assets and liabilities denominated in currencies other than AUD are to be converted to AUD using the mid-point rate (of market buying and selling spot quotations) effective as at the end of the reporting period. An RSE licensee may use those AUD exchange rates that it judges to be a

representative closing mid-market rate as at the end of the reporting period. However, to ensure consistency across related returns and to assist in the reconciliation between these returns, an RSE licensee must use the same exchange rates across all returns to APRA.

Items on SRF 553.3 must be reported as at the end of the reporting period or with respect to transactions that occurred during the reporting period as specified.

Amounts in SRF 553.3 are to be reported as whole dollars. Percentages are to be reported as an unconverted number to two decimal places. For example, 12.34 per cent is to be reported as 0.1234.

Definitions

Terms highlighted in ***bold italics*** indicate that the definition is provided in *Reporting Standard SRS 101.0 Definitions for Superannuation Data Collections* (SRS 101.0).

Specific instructions

Table 1: Out Of Cycle Valuations – Material Unlisted Investments

This table must be completed for all ***reportable exposures*** reported in SRF 553.1, where an out of cycle revaluation has occurred during the reporting period.

Where an out of cycle valuation adjustment is triggered by the revaluation of an underlying investment in an indirectly held investment, report details of the underlying investment in columns 11 to 14.

Column	Field name	Unique identifier	Applicable to	Valid values	Description
1	Investment Identifier	Y		Text (20 100)	Report the <i>investment identifier</i> of the investment subject to out of cycle valuation. The <i>investment identifier</i> must correspond to the <i>investment identifier</i> reported in SRF 553.1.
2	Opening Value Of The Investment		All filers	Whole Dollars	Report the pre-adjustment net asset value of the investment subject to the out of cycle valuation.
3	Out Of Cycle Valuation Trigger Date	Y	All filers	Date	Report the date when the out of cycle valuation event, metric or indicator was triggered, or the earliest date when the RSE licensee commenced the out of cycle valuation review.
4	Out Of Cycle Valuation Trigger Event Type		All filers	<ul style="list-style-type: none"> • <i>Asset-related Event</i> • <i>Market-related Event</i> • <i>Member-related Event</i> • Other 	Report the type of trigger event or indicator for the out of cycle valuation review.

5	Description Of The Out Of Cycle Valuation Trigger Per Policy		All filers	Text (100)	Report the valuation trigger event, metric or indicator as outlined in the RSE licensee's Board approved Valuation Policy. Include in the description any quantitative value of the trigger level of metric.
6	Description Of The Out Of Cycle Valuation Trigger At Trigger Date		All filers	Text (100)	Report details of the actual out of cycle valuation trigger event at trigger date. Include quantitative details where relevant.
7	Out Of Cycle Value Adoption Date	Y	All filers	Date	Report the date when the out of cycle valuation adjustment was incorporated into the value of the investment option.
8	Out Of Cycle Value Adopted		All filers	Whole dollars	Report the value of the investment adopted following an out of cycle valuation review.

9	Approver Of Valuation	Y	All filers	<ul style="list-style-type: none"> • <i>Board</i> • <i>Investment Committee Or Equivalent</i> • <i>Valuation Committee</i> • <i>Other Board Level Committee</i> • <i>CFO Or Equivalent</i> • <i>Other RSE Licensee Executive</i> • <i>Management Level Investment Committee</i> • <i>Other Management Level Committee</i> • Other 	Report the RSE licensee authority that approved the out of cycle valuation.
---	-----------------------	---	------------	--------------------------------------------------------------------------------------------------------------------------------------------------------------------------------------------------------------------------------------------------------------------------------------------------------------------------------------------------------------------------------------------------------------------------	-----------------------------------------------------------------------------

10	Valuer Type	Y	All filers	<ul style="list-style-type: none"> ● Internal - RSE Licensee ● Independent Valuer Appointed By The RSE Licensee ● Other Service Provider For The RSE Licensee ● Investment Manager ● Independent Valuer Appointed By The Investment Manager ● Other Service Provider For The Investment manager ● <u>Independent Valuer Appointed By The RSE Licensee</u> ● <u>Internal - RSE Licensee</u> ● <u>Other Service Provider For The RSE Licensee</u> ● Independent Valuer Appointed By Investee Company ● Not Available 	Report the <i>Valuer Type</i> for the out of cycle valuations reported.
----	-------------	---	------------	-------------------------------------------------------------------------------------------------------------------------------------------------------------------------------------------------------------------------------------------------------------------------------------------------------------------------------------------------------------------------------------------------------------------------------------------------------------------------------------------------------------------------------------------------------------------------------------------------------------------------------------------------------------------------	-------------------------------------------------------------------------

11	Investment Identifier Type Of Underlying Investment		All filers	<ul style="list-style-type: none"> • <i>International Securities Identification Number (ISIN)</i> • <i>Committee on Uniform Security Identification Procedures (CUSIP)</i> • <i>CUSIP International Numbering System (CINS)</i> • <i>Stock Exchange Daily Official List (SEDOL) identifier</i> • <i>Options Clearing Corporation (OCC) Option Symbol</i> • <i>ABN</i> • <i>LEI</i> • <i>APIR Code</i> • <i>Internal Investment Identifier</i> • Not Applicable • Not Available 	<p>Where an out of cycle valuation is triggered by the revaluation of an underlying investment, report the <i>investment identifier type</i>.</p> <p>Report publicly available (external) identifiers where available. Otherwise, use <i>internal investment identifier</i>.</p> <p>Where there is more than one external identifier available to the investment, use the most common.</p>
12	Investment Identifier Of Underlying Investment		All filers	Text (100)	<p>Where an out of cycle valuation is triggered by the revaluation of an underlying investment, report the <i>investment identifier of underlying investment</i>. Otherwise, leave this field blank.</p>
13	Underlying Investment Name		All filers	Text (100)	<p>Where an out of cycle valuation is triggered by the revaluation of an underlying investment, report the name of the underlying investment. Otherwise, leave this field blank.</p>

14	Percentage Holdings In Underlying Investment		All filers	Percentage to 2 decimal places	Where an out of cycle valuation is triggered by the revaluation of an underlying investment, report the percentage holdings in the underlying investment. Percentage holdings should be calculated using the pre revaluation investment value. Otherwise, leave this field blank.
----	----------------------------------------------	--	------------	--------------------------------	-----------------------------------------------------------------------------------------------------------------------------------------------------------------------------------------------------------------------------------------------------------------------------------

Table 2: Out Of Cycle Valuations – Material Impact On Investment Options

Instructions

Report for each *investment option* where the aggregate impact of out of cycle valuation adjustment on unlisted investments held by the investment option during the reporting period is at least 30 basis points (30 bps) on the opening value of the *investment option*.

Report details depending on the investment as follows:

- for material unlisted investments reported in SRF 553.1, report details for each relevant *reportable exposure* in this table.
- for non-material unlisted investments (i.e. unlisted investments other than those reported in SRF 553.1), report for each relevant *reportable exposure* where details are available. Otherwise, report *reportable exposure* in aggregate by strategic sector type.
- for out of cycle valuation adjustments implemented at asset sector level, report in aggregate by strategic sector type.

Column	Field name	Unique identifier	Applicable to	Valid values	Description
1	Investment Option Identifier	Y	All filers	Text (20)	Report the <i>investment option identifier</i> . The <i>investment option identifier</i> must correspond to an <i>investment option identifier</i> reported in SRF 605.0.
2	Opening Market Value Of The Investment Option		All filers	Whole Dollars	Report the market value of the <i>investment option</i> before the out of cycle valuation.
3	Out Of Cycle Value Adoption Date	Y	All filers	Date	Report the date when the out of cycle valuation adjustment was incorporated into the value of the <i>investment option</i> .

4	Investment Identifier Type	Y	All filers	<ul style="list-style-type: none"> • <i>International Securities Identification Number (ISIN)</i> • <i>Committee on Uniform Security Identification Procedures (CUSIP)</i> • <i>CUSIP International Numbering System (CINS)</i> • <i>Stock Exchange Daily Official List (SEDOL) identifier</i> • <i>Options Clearing Corporation (OCC) Option Symbol</i> • <i>ABN</i> • <i>LEI</i> • <i>APIR Code</i> • <i>Internal Investment Identifier</i> • Not Applicable • Not Available 	<p>Report the <i>investment identifier</i> type of the investment subject to the out of cycle valuation.</p> <p>Report publicly available external <i>investment identifiers</i>, where available. Otherwise, use <i>internal investment identifier</i>.</p> <p>Where there is more than one external <i>investment identifier</i> available to the investment, use the most common and apply consistently across reporting periods.</p> <p>Report ‘Not Applicable’ if reporting in aggregate.</p>
5	Investment Identifier		All filers	Text (100)	<p>Report the <i>investment identifier</i> of the investment that corresponds to the <i>investment identifier type</i>.</p> <p>Leave this field blank if reporting in aggregate.</p>
6	Investment Name		All filers	Text (100)	<p>Report the name of the investment (report the legal name where available).</p> <p>Leave this field blank if reporting in aggregate.</p>

7	Out Of Cycle Valuation Impact		All filers	Percentage to 2 decimal places	Report the impact of the investment's out of cycle valuation adjustment on the value of the <i>investment option</i> . Impact should be calculated only for the effect of the valuation adjustments reported in <i>Out of Cycle Valuation Adjustment</i> . For example, 0.29 per cent is to be reported as 0.0029.
8	Opening Value Of The Investment		All filers	Whole dollars	Report the pre-adjustment net asset value of the investment subject to the out of cycle valuation held by the <i>investment option</i> .
9	Out Of Cycle Valuation Adjustment		All filers	Whole dollars	Report the out of cycle valuation adjustment on the investment held by the <i>investment option</i> .
10	Investment Strategic Sector Type	Y	All filers	<ul style="list-style-type: none"> • <i>Cash</i> • <i>Fixed Income</i> • <i>Fixed Income Excluding Credit</i> • <i>Credit</i> • <i>Equity</i> • <i>Property</i> • <i>Infrastructure</i> • <i>Alternatives</i> • <i>Growth Alternatives</i> • <i>Defensive Alternatives</i> 	Report the <i>strategic sector type</i> of the investment.

11	Level of Out Of Cycle Valuation Reporting	Y	All filers	<ul style="list-style-type: none"> • <i>Individual Asset level</i> • <i>Aggregate Asset Level</i> • <i>Asset Sector Level</i> 	Report the level at which the out of cycle valuation adjustments is being reported on.
----	-------------------------------------------	---	------------	----------------------------------------------------------------------------------------------------------------------------------------------------------------	----------------------------------------------------------------------------------------

Table 3: RSE Valuation Profile

Instructions

Complete this table for all unlisted assets held by the RSE, defined benefit RSE or PST. Exclude balances of assets held within *externally managed investment options*.

For the purposes of reporting in this table, unlisted assets include:

- Unlisted Property,
- Unlisted Infrastructure,
- Unlisted Equity,
- Unlisted Alternatives, and
- Private Credit (i.e. where the Asset Class Characteristics ~~3-2~~ is Fixed Income Private Debt).

Column	Field name	Unique identifier	Applicable to	Valid values	Description
1	Investment Management Type	Y	All filers	<ul style="list-style-type: none"> • <i>Internally managed investment</i> • <i>Externally managed investment</i> 	Report the <i>investment management type</i> .
2	Investment Strategic Sector Type	Y	All filers	<ul style="list-style-type: none"> • <i>Fixed Income</i> • <i>Fixed Income Excluding Credit</i> • <i>Credit</i> • <i>Equity</i> • <i>Property</i> • <i>Infrastructure</i> • <i>Alternatives</i> • <i>Growth Alternatives</i> • <i>Defensive Alternatives</i> 	Report the <i>strategic sector</i> of the investment.
3	Investment Strategic Sector Domicile Type	Y	All filers	<ul style="list-style-type: none"> • <i>Australian Domicile</i> • <i>International Domicile</i> • Not Specified 	Report the <i>domicile type</i> of the strategic sector of the investment.
4	Aging Of Valuation	Y	All filers	<ul style="list-style-type: none"> • <i>up to 3 months</i> • <i>> 3 to 6 months</i> • <i>> 6 to 12 months</i> • <i>> 12 months</i> • Not Available 	Report the period since the last valuation of the investments.

5	Market Value Of Investments			Whole dollars	Report the market value of the investment.
---	-----------------------------------	--	--	---------------	--------------------------------------------

Table 4: RSE Internally and Externally Managed Investments

For each RSE, defined benefit RSE or PST, report *internally managed investments* and *externally managed investments*.

Column	Field name	Unique identifier	Applicable to	Valid values	Description
1	Investment Management Type	Y	All filers	<ul style="list-style-type: none"> • <i>Internally managed investment</i> • <i>Externally managed investment</i> 	Report the <i>investment management type</i> .
2	Investment Strategic Sector Type	Y	All filers	<ul style="list-style-type: none"> • <i>Cash</i> • <i>Fixed Income</i> • <i>Fixed Income Excluding Credit</i> • <i>Credit</i> • <i>Equity</i> • <i>Property</i> • <i>Infrastructure</i> • <i>Alternatives</i> • <i>Growth Alternatives</i> • <i>Defensive Alternatives</i> 	Report the <i>strategic sector</i> of the investment.
3	Investment Strategic Sector Listing Type	Y	All filers	<ul style="list-style-type: none"> • <i>Listed</i> • <i>Unlisted</i> • Not Specified 	Report the <i>listing type</i> of the strategic sector of the investment.
4	Investment Strategic Sector Domicile Type	Y	All filers	<ul style="list-style-type: none"> • <i>Australian Domicile</i> • <i>International Domicile</i> • Not Specified 	Report the <i>domicile type</i> of the strategic sector of the investment.

5	Market Value Of Investments		All filers	Whole dollars	Report the market value of the investment.
---	-----------------------------------	--	------------	---------------	--------------------------------------------

Appendix A: Reportable Exposure Illustration

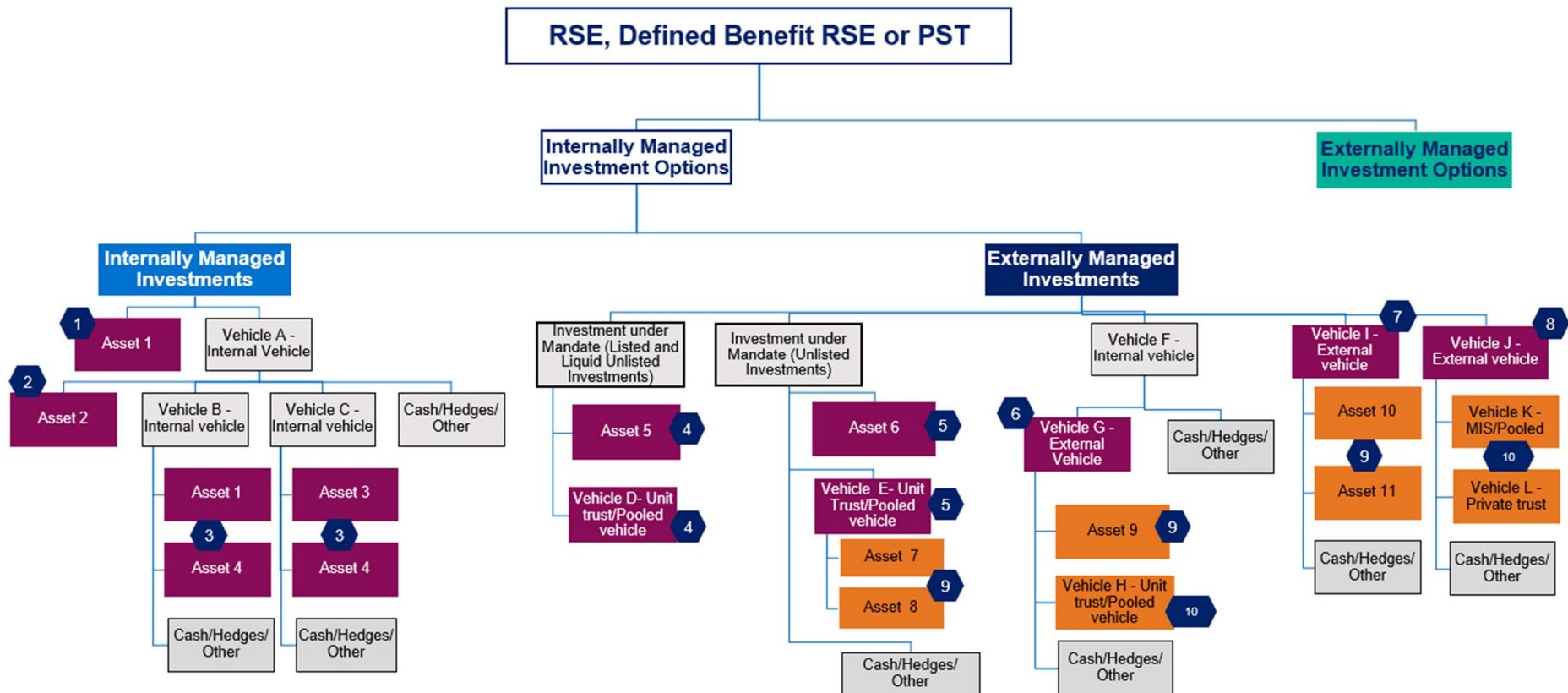
This appendix illustrates the approach to identify the *reportable exposures* that will be the basis for the measurement of exposures and in applying materiality in reporting for SRF 553.0 and SRF553.1. Internally managed assets are reported on a look through basis.

In the diagram below, the term ‘vehicle’ is used to refer to any form of structure that holds the assets. It refers to pooled funds, assets held in trust structures, managed investment schemes, and any other structures that pool assets together and for which ownership is determined. Vehicles can either be ‘internal vehicles’ which are created by the RSE licensee and/or its connected entity, or ‘external vehicles’ which are created by non-connected entities (e.g. external investment managers) that hold assets managed on behalf of the RSE licensee and/or its connected entities. Connected entity has its meaning under section 10(1) of the SIS Act.

For internally managed investments, the *reportable exposure* of the RSE, defined benefit RSE or PST applies is at the asset level. The size of the *reportable exposure* is the aggregate value to the same asset across all internally managed investments. For example, the *reportable exposure* to Asset 1 (e.g. ABC shares) is measured as the sum of the exposure to Asset 1 held directly (in scenario 1) and the exposure to Asset 1 held by Vehicle B. Report the *reportable exposures* separately where the investments are held at different internal vehicles.

For externally managed investments other than those under mandate in Scenarios 6-8, the *reportable exposure* is at the vehicle level. The *reportable exposure* is measured, and materiality applied at the vehicle level. Vehicles with greater than 80% allocation to listed or liquid unlisted are reported in SRF 553.0 while vehicles that hold at least 20% investment in unlisted assets are reported in SRF 553.1

For externally managed investments that are under mandate, the *reportable exposures* are the investments held under the mandate.



1	Reportable Exposure, where the RSE's exposures to investments will be measured and materiality applied at this level.
2	Underlying investments held in the vehicles where the reportable exposure is an investment vehicle. Reporting of underlying assets only for unlisted investments.
3	For externally managed investment options , only report SRF 553.2 Table 2, SRF 553.3 Table 2, and SRF 553.3 Table 4.
4	Scenarios

The scenarios outlined in the diagram will be reported in the following tables in SRF 553.0 and SRF 553.1.

Reporting Forms/ Tables	Materiality / Scope	Internally Managed Investment Option			Externally Managed Investment Option
		Internally Managed Investment	Externally Managed Investment Mandate	Externally Managed Investment Vehicle	
SRF 553.0 Table 1: Internally Managed – Material Listed or Liquid Unlisted Investments	20 largest <i>reportable exposures</i> to listed or liquid unlisted assets and <i>reportable exposures</i> to listed or liquid unlisted assets that are at least 0.5% of total investments of the RSE, defined benefit RSE or PST	Yes (Scenarios 1, 2, 3)	No	No	No
SRF 553.0 Table 2: Externally Managed – Material Listed or Liquid Unlisted Investments		No	Yes (Scenario 4)	Yes (Scenarios 6, 7, 8 for vehicles with greater than 80% allocation to listed or liquid unlisted)	No
SRF 553.1 Table 1: Internally Managed – Material Unlisted Investments	20 largest <i>reportable exposures</i> to unlisted assets and <i>reportable exposures</i> to unlisted assets that are at least 0.5% of total investments of the RSE, defined benefit RSE or PST	Yes (Scenarios 1, 2, 3)	No	No	No
SRF 553.1 Table 2: Externally Managed – Material Unlisted Investments		No	Yes (Scenario 5)	Yes (Scenarios 6, 7, 8, for	No

				vehicles that hold at least 20% investment in unlisted assets)	
SRF 553.1 Table 3: Externally Managed – Material Unlisted Investments (Valuation)	3 largest underlying investments held by investment vehicles reported in SRF 553.1 Table 2	No	Yes (Scenarios 9, 10)	Yes (Scenarios 9, 10)	No
SRF 553.2 Table 1: Investment Option Exposures	Report <i>investment options</i> that have exposures to <i>reportable exposures</i> reported in SRF 553.0 Table 1 and 2, SRF 553.1 Table 1 and 2.	Yes	Yes	Yes	No
SRF 553.2 Table 2: Country Exposures	Report each country of investment for each RSE, defined benefit RSE or PST	Yes	Yes	Yes	Yes
SRF 553.3 Table 1: Out Of Cycle Valuations – Material Investments	For <i>reportable exposures</i> reported in SRF 553.1 Table 1 and 2	Yes	Yes	Yes	No
SRF 553.3 Table 2: Out Of Cycle Valuations – Material Impact on Investment Options	Report for each <i>investment option</i> Impacted by out of cycle valuation adjustment(s) of at least 30 bps during the reporting period.	Yes	Yes	Yes	Yes
SRF 553.3 Table 3: RSE Valuation Profile	Unlisted assets held	Yes	Yes	Yes	No

SRF 553.3 Table 4: RSE Internally and Externally Managed Investments	Report <i>internally managed investments</i> and <i>externally managed investments</i>	Yes	Yes	Yes	Yes
----------------------------------------------------------------------	----------------------------------------------------------------------------------------	-----	-----	-----	-----